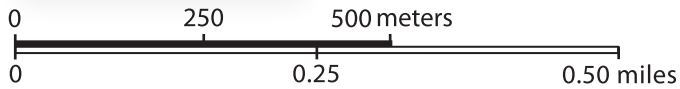




# Intermediate Orienteering



Map Scale 1 : 10 000  
Contour Interval 5 m

The **CLUE SHEET** below - helps you figure out if the checkpoints you locate are the correct ones. Visit each checkpoint in order (1-9). When you find the checkpoint, see if the two digit post number matches the clue sheet; if it does, you are at the correct checkpoint. Write the letter printed on the post in the blank column. Once you've located all the checkpoints and solved the Park's word puzzle go to the Nature Center and unlock the box using code 1101 to return borrowed compasses and to stamp your passport.

Course Level		Course Length	Course Climb
Intermediate		3.5 km	160 m
S	Post No.	Use this column to write the corresponding <b>LETTER</b> shown on the post.	
1	30	indistinct trail junction	
2	29	bottom of cliff	
3	32	top of hill	
4	31	boulder	
5	26	trail junction	
6	33	east end of indistinct stream	
7	25	boulder	
8	23	bend in trail	
9	22	power line trail junction	
F	○	250 m	>◎
Distance from your last checkpoint to the finish.			

## LEGEND

	Contour
	Form Line
	Earth Bank / Earth Wall
	Small Gully or Ditch / Gully
	Knoll / Small Knoll / Dot Knoll
	Broken Ground / Small Depression / Pit
	Impassable Cliff
	Passable Rock Face
	Stony Ground / Rock Pile / Bare Rock
	Boulder / Large Boulder / Boulder Field
	Lake
	Pond / Water Hole / Well Head/Well
	Crossable Wide Watercourse, Foot Bridge
	Small Crossable Watercourse, Fallen Log
	Intermittent Stream / Wet Ditch
	Uncrossable Marsh / Marsh
	Open / Rough Open / Open w/Scattered Trees
	Slow Run / Difficult Running
	Fight
	Slow Run / Difficult Running, Good visibility
	Open Sandy Ground
	Distinct Vegetation Boundary
	Tree / Rootstock, Rootstock with downed tree
	Park Boundary
	Motorway, Major Paved Road.
	Minor Paved Road, Non-Paved Road
	Vehicle Track
	Footpath
	Small Foot Path
	Fence
	High Fence / Ruined Fence
	Building / Shelter / Man-made Object
	Ruin / Small Ruin
	Power Line
	Stone Wall
	Small Tunnel or Culvert / Grave
	Hunter Stand
	Disc Golf Tee / Disc Golf basket location
	Parking Lot, Sewer Top
	Railroad
	Out of Bounds / Private Property

## Helpful hints

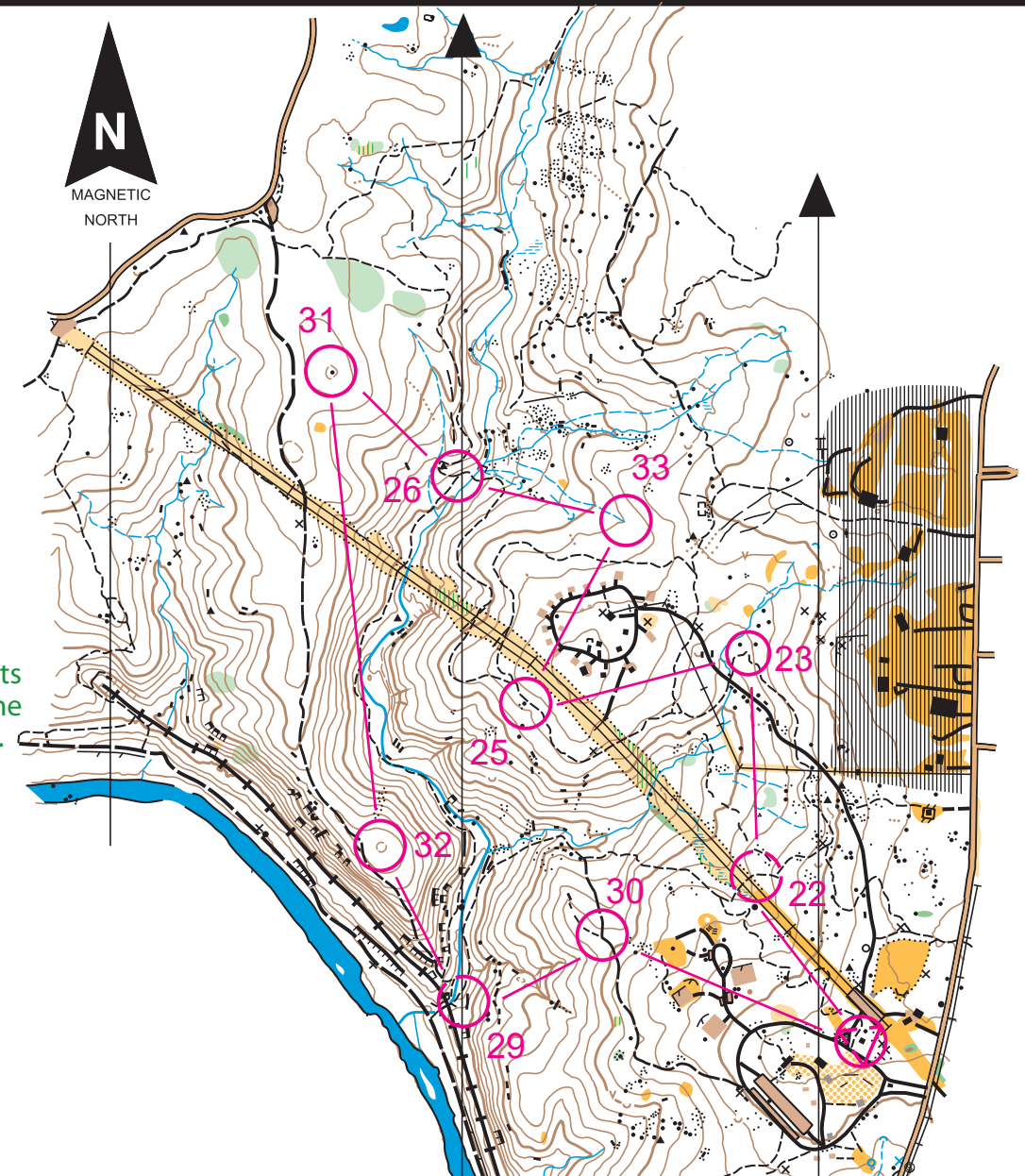
Use your legend to understand features on the map.

The contour lines will help you understand the landscape. If the lines are closer to each other that means the terrain is steep. If the lines are farther apart that means the terrain is not as steep. Reading the contours are important in deciding whether or not you want to go up and over a hill or whether you want to go around it.

The intermediate course length is measured as the crow flies. This means that depending upon the route you choose from one checkpoint to the next the actual distance traveled may be longer than indicated on the clue sheet.



Look for posts like this as the checkpoints.



**PARK QUEST**  
WHERE A FAMILY BECOMES A TEAM